

Doteck

Doteck HD Series

HD-SDI Digital Video fiber optic Transmission System



19-inch 1RU, dual power supply



Small Box

Features

- (1) HD-SDI/SDI/ASI signal auto recognition, need not select by hand
- (2) Compliant with the standards of SMPTE292M, SMPTE259M, SMPTE297M, SMPTE310M, SMPTE305M (SDTI), SMPTE344M
- (3) Compliant with the standard of DVB-ASI (EN50083-9)
- (4) Auto adaption to the speed of HD-SDI/SDI 143/177/270/360/540/1483.5/1485Mbps, or DVB-ASI
- (5) With automatic cable equalization function, compensation for cable transmission loss
- (6) Convenient instructions of LED status, data rate, optical link, power supply etc.
- (7) PCB boards made with environment friendly Pb-free
- (8) PCB boards made with multilayer design, to ensure stable and reliable signal transmission
- (9) All components, including connectors, are ordered from public-known manufacturers in the world, high stability and reliability ensurance
- (10) Enclosure box material is made of aluminum, elegant appearance, and light weight
- (11) Dual switching power supply design, wide voltage range, reliable long-term running
- (12) A variety of installation options: 18-slot rack(3RU), 8-slot rack(2RU), particularly suitable for large volume optical transmission platform construction, and also available for 4-slot rack(1RU), 2-slot(1RU) rack and single-slot mini rack, fixed 19-inch 1RU box, mini small box

Introduction

Dotek HD series digital video fiber optic transmission system can transmit one HD-SDI(1483.5M/1485Mbps)high definition digital video, or one SD-SDI(143M/177M/270M/360M/540Mbps)standard definition digital video or one DVB-ASI stream through one single mode fiber or multimode fiber with the standards of SMPTE259M, SMPTE297M, SMPTE310M, SMPTE305M (SDTI).Due to the advanced

digital fiber optic transmission technology, almost you need not make any adjustments, simple to set up, easy to operate.

Dotek HD series transmitter provides one HD-SDI input, and one loop-through for local monitoring. The receiver outputs 2-way parallel HD-SDI digital video.

Dotek HD series transmitter equipped with auto-cable equalization circuit, and cable driver circuit available at receiver.

Dotek HD series, both at the transmitter and receiver, signal jitter elimination circuit available, to ensure high quality signal transmission over long distance fiber cable.

Dotek HD series uses 3.3V power supply system, low power consumption.

Technical Specification

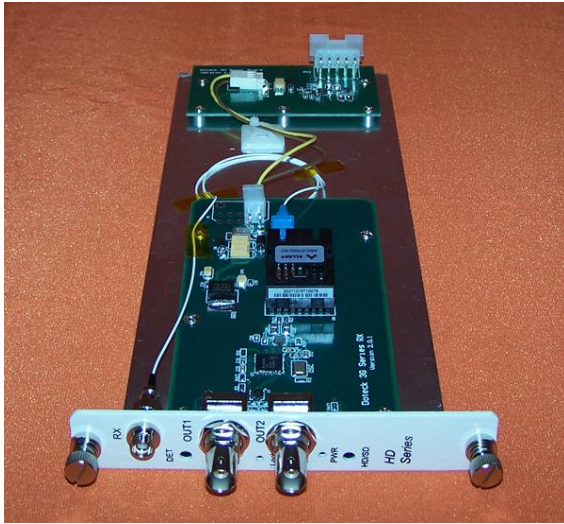
HD-SDI Input	
Signal Standard	SMPTE292M,SMPTE259M,SMPTE297M,SMPTE 310,SMPTE305(SDTI), DVB-ASI(EN50083-9)
Number of Input	1 plus 1 loop-through
Resolution	10 Bit
Signal Level	>380mVp-p
Auto-Cable Equalization	>250m(270Mbps)(BELDEN8281 Cable) >100m(1485Mbps)(BELDEN8281 cable)
Input Return Loss	>15dB (1485Mbps)
Impedance	75Ω
Connector	BNC
HD-SDI Output	
Channel Capacity	2
Signal Level	800mVp-p±10%
Rise/Fall time	<0.8ns
HD-SDI Jitter	<0.2UI(134ps)@100kHz <1.0UI(673ps)@10Hz
SDI Jitter	<0.2UI(740ps)@10Hz <0.2UI(740ps)@1kHz
Impedance	75Ω
Connector	BNC
Physical	
Dimension(HxWxD,	

mm)	
19-inch 1RU Box (2)	44×433×340
Mini Box	22.5x72x119
Small Box	44x146x169
Modular card	132×23×291
One slot Rack	44x228x340
2-slot Rack	44x430x340
4-slot Rack	53x430x340
8-slot Rack	101x430x340
18-slot rack	133x483x344
Power Supply	130 - 260VAC, 50-60Hz
Power Consumption	<10W
Temperature	0 to +70 Degree
Humidity	0 to 95% RH Non-condensing
LED Status Indicator	Power, Optical Link, Video Activity
Optical	
Fiber Type	Single mode
Number of fiber	1
Wavelength	1310nm/1550nm
Distance	0-40km, or 0-80km, or 0-100km optional
Connector	FC/PC, or SC/PC

More setup options:



18-slot, 19-inch 3RU, dual power supply



Fiber optic module



8-slot, 19-inch, dual power supply



4-slot, 19-inch, dual power supply



2-slot, 19-inch, dual power supply



One slot, Built-in power supply



Mini Box, external power supply



Fixed 19-inch 1RU standard cabinet with dual power supply

Doteck

Doteck Digital Technologies

Room 19D, 11A, 11B, 11D, Building 2, International Incubation Zone, No. 2, Shangdi Info Road, Haidian District, BEIJING, CHINA, Postcode: 100085

Tel: +86-10-62120151

FAX: +86-10-82893162

Mobile: +86-13910290608

Contact: LI XINJIAN

E-mail: Doteck@126.com

Welcome to visit our website for more info: www.Doteck.com